



## 5 bed terraced house to buy in

Crosby View, Holbeck, Leeds, West  
Yorkshire, LS11 9NB

# £120,000

 x 5  x 2

Tenure

**Freehold**

On Street parking

## Property features

- ✓ For Sale By Online Auction, T&C
- ✓ Ideal Investment HMO  
Opportunity - Currently Tenanted
- ✓ Generating £19,500 Gross Income
- ✓ Five Bedroom
- ✓ EPC Rating D

## Key Information

- ✓ EPC Rating: D
- ✓ Heating supply: Gas

## Description

A five bedroom through terrace that is currently set out and let as a four-bedroom HMO. The property comprises of a cellar, fitted kitchen, five good sized bedrooms and has 3 shower facilities consisting of a main family bathroom and two en-suites.

The property is located within close proximity to Leeds City Centre with excellent motorway and public transport links. With local shops, supermarket, takeaways, post office and Holbeck Park close by offers itself to working professionals in the area being able to have everything they need on their doorstep but also commutator friendly.

Room 1 - £350 pcm - Currently in contract until January 2023

Room 2 - £450 pcm - Currently on the market to let

Room 3 - £325 pcm - Currently in contract until April 2022

Room 4/5 - £500 pcm - Currently in contract until July 2022

Tenure: Freehold

Price: £120,000

Property Type: Terraced House

Parking: On Street

Heating: Gas

## **En Suite**

A low level flush WC, wash hand basin and shower cubicle with extractor fan.

---

## **Bedroom Five**

Double glazed window to the rear with gas central heating radiator and ensuite.

---

## **Bedroom Four**

Velux window with a slopped roof.

---

## **Second Floor**

Access to bedroom four and five.

---

## **Bathroom**

The room consists of a low level flush WC, wash hand basin and shower cubicle with extractor fan.

---

## **Bedroom Three**

Double glazed window to the rear and gas central heating radiator.

---

## **Bedroom Two**

Double glazed window to the front elevation with an ensuite and gas central heating radiator. Ensuite has a low level flush WC, wash hand basin and shower cubicle. Extractor fan.

---

## **Bedroom One**

Good sized bedroom with double glazed window.

---

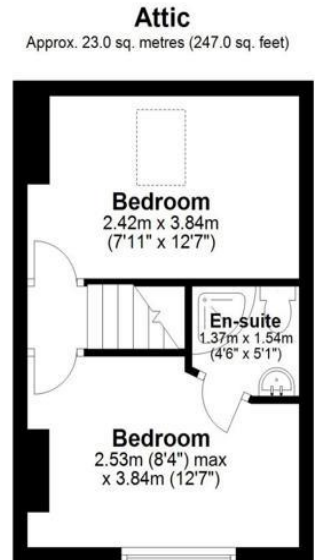
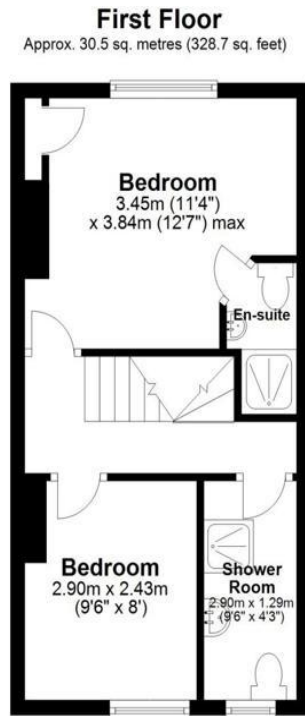
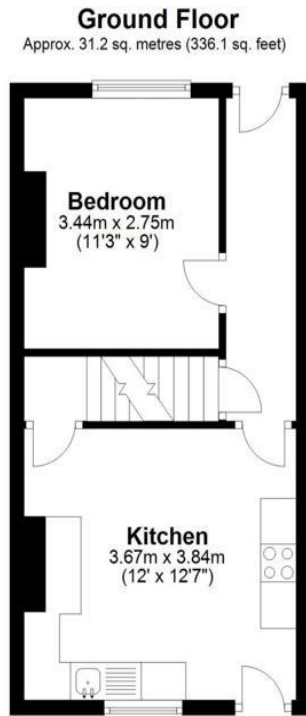
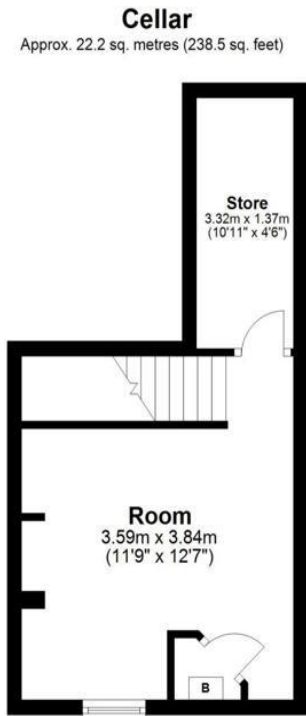
## **Kitchen**

A fitted kitchen with built-in wall and base units with work surfaces incorporating a sink and drainer, space for a washing machine, electric hob and oven, cooker hood, access to the cellar space and gas central heating radiator. Double glazed window to the rear with a door leading to the rear garden.

---

## **Entrance Hall**

Access into the first bedroom, kitchen, stairs to the first floor and gas central heating radiator.



Total area: approx. 106.9 sq. metres (1150.4 sq. feet)

Floor plans are for identification only. All measurements are approximate.  
Plan produced using PlanUp.

Energy Efficiency Rating		
	Current	Potential
<i>Very energy efficient - lower running costs</i>		
(92-100) <b>A</b>		
(81-91) <b>B</b>		87
(69-80) <b>C</b>		
(55-68) <b>D</b>	55	
(39-54) <b>E</b>		
(21-38) <b>F</b>		
(1-20) <b>G</b>		
<i>Not energy efficient - higher running costs</i>		
<b>England, Scotland &amp; Wales</b>		EU Directive 2002/91/EC

Crosby View, Holbeck, Leeds, West Yorkshire, LS11 9NB

Contact your local branch today for more information on this property:

**Mercantile House Silverlink Business Park, Wallsend, Tyne and Wear, NE28 9NX,**  
**[www.partneragents.co.uk](http://www.partneragents.co.uk)**

These particulars, whilst believed to be accurate are set out as a general outline only for guidance and do not constitute any part of an offer or contract. Intending purchasers should not rely on them as statements of representation of fact, but must satisfy themselves by inspection or otherwise as to their accuracy. No person in this firm's employment has the authority to make or give any representation or warranty in respect of the property.

