



## 3 bed semi-detached house to buy in SO16

Dunvegan Drive, Southampton, Hampshire, SO16 8DD

**£225,000** Starting Bid

 x3  x1  x1

Tenure

**Freehold**

Driveway & Garage parking

## Property features

- ✓ Being Sold via Secure Sale Online Bidding T&C's Apply
- ✓ Three-bedroom semi-detached
- ✓ Spacious open-plan lounge/dining
- ✓ Separate kitchen
- ✓ EPC Rating C

## Key Information

- ✓ Council Tax: Band C
- ✓ EPC Rating: C
- ✓ Heating supply: Gas
- ✓ Electric supply: National Grid
- ✓ Water supply: Direct mains water
- ✓ Broadband: FTTP (fibre to the premises)
- ✓ Mobile signal: Good

## Description

Situated on a quiet residential road, this three-bedroom semi-detached property on Dunvegan Drive presents an exciting opportunity for buyers seeking a project with excellent potential. Offering generous room sizes and a traditional layout, the home is ideal for those looking to modernise and add value.

The ground floor features a bright and spacious open-plan lounge and dining area, enhanced by large windows that allow ample natural light to flow throughout the property. There is a separate kitchen with convenient access to the garden, along with useful under-stairs storage and additional cupboard space. Upstairs, the property offers three well-proportioned bedrooms and a family bathroom. The home benefits from double glazing and a practical layout with an easy flow between the principal living spaces, making it well-suited to modern family living once updated. Externally, the property boasts a driveway providing off-road parking, a garage, and an enclosed rear garden with patio and outdoor entertaining areas.

The garden offers a private space with scope for landscaping or extension (subject to the necessary planning permissions). The property is ideally located close to local schools, shops, parks and woodlands, as well as convenient access to motorways and the hospital. With strong potential for and extension, this home represents a fantastic opportunity for investors or buyers looking to create their ideal family home.

Council Tax Band: C

Tenure: Freehold

Price: Starting Bid £225,000

Property Type: Semi-detached house

Parking: Driveway & Garage

Construction materials: Brick and block

Roofing type: Clay tiles

Risk of floods and or erosion: No

Flooded in last 5 years: No

Flood defences: No

Planning permissions or proposals for development: No

Coalfield or mining area: No

Listed property: No

Conservation area: No

Public rights of way: No

Adaptions for accessibility: No

Restrictions: No

Required access: No

Heating: Gas

Electric: National Grid

Water: Direct mains water

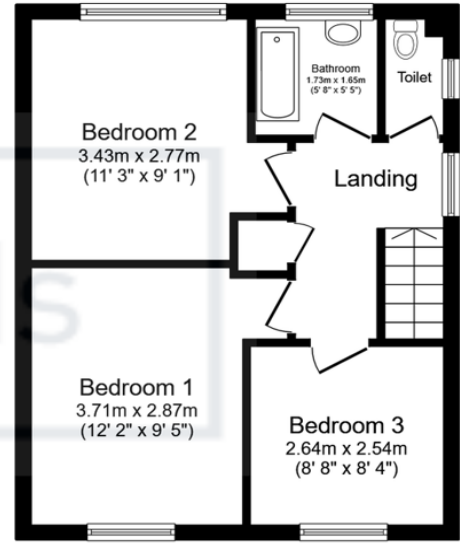
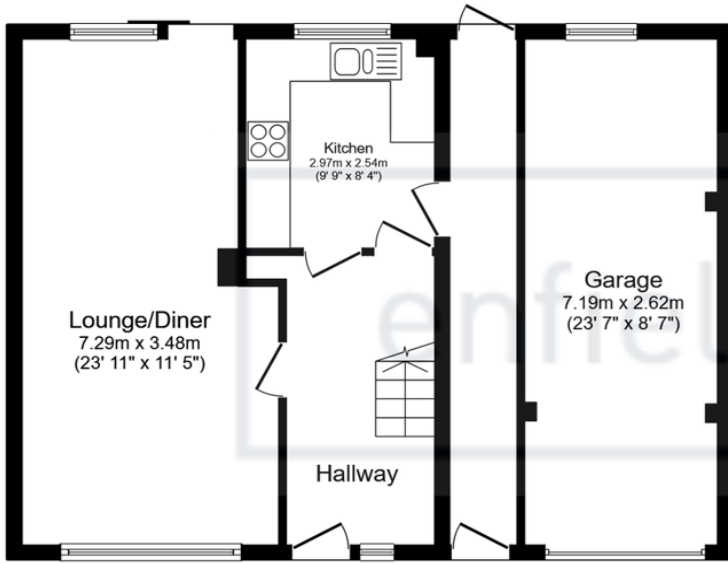
Water meter: Yes

Sewerage: Standard UK domestic

Air conditioning: No

Broadband: FTTP (fibre to the premises)

Mobile signal coverage: Good



Total floor area: 108.0 sq.m. (1,162 sq.ft.)

This floor plan is for illustrative purposes only. It is not drawn to scale. Any measurements, floor areas (including any total floor area), openings and orientations are approximate. No details are guaranteed, they cannot be relied upon for any purpose and do not form any part of any agreement. No liability is taken for any error, omission or misstatement. A party must rely upon its own inspection(s). Powered by www.Propertybox.io



Energy Efficiency Rating		
	Current	Potential
<i>Very energy efficient - lower running costs</i>		
(92-100) <b>A</b>		
(81-91) <b>B</b>		
(69-80) <b>C</b>	74	80
(55-68) <b>D</b>		
(39-54) <b>E</b>		
(21-38) <b>F</b>		
(1-20) <b>G</b>		
<i>Not energy efficient - higher running costs</i>		
<b>England, Scotland &amp; Wales</b>	EU Directive 2002/91/EC	

Dunvegan Drive, Southampton, Hampshire, SO16 8DD

Contact your local branch today for more information on this property:

**Mercantile House Silverlink Business Park, Wallsend, Tyne and Wear, NE28 9NX,**  
**[www.partneragents.co.uk](http://www.partneragents.co.uk)**

These particulars, whilst believed to be accurate are set out as a general outline only for guidance and do not constitute any part of an offer or contract. Intending purchasers should not rely on them as statements of representation of fact, but must satisfy themselves by inspection or otherwise as to their accuracy. No person in this firm's employment has the authority to make or give any representation or warranty in respect of the property.

