



## 2 bed flat to buy in ME16

Farleigh Lane, Maidstone, Kent, ME16 9BJ

**£130,000** Starting Bid

 x2  x1  x1

Tenure

**Leasehold**

On Street parking

## Property features

- ✓ Being Sold via Secure Sale online bidding. Terms and Conditions
- ✓ First Floor
- ✓ Two bedrooms
- ✓ Vacant
- ✓ EPC Rating D

## Key Information

- ✓ Council Tax: Band B
- ✓ EPC Rating: D
- ✓ Heating supply: Gas
- ✓ Electric supply: National Grid
- ✓ Water supply: Direct mains water
- ✓ Broadband: FTTP (fibre to the premises)
- ✓ Mobile signal: Good

## Description

Farleigh Court is well positioned for easy access to Maidstone town centre, which offers a wide range of shops, restaurants, cafés, and leisure facilities, including Fremlin Walk shopping centre and the Lockmeadow Entertainment Complex. For commuters, Maidstone East, Maidstone West, and Maidstone Barracks stations provide rail services to London and surrounding areas, while the M20 motorway is easily accessible, offering convenient road links to London, Ashford, and the Kent coast.

Council Tax Band: B

Tenure: Leasehold

Length of Lease: 171

Annual Ground Rent Amount: £1.00

Annual Service Charge Amount: £1,212.00

Price: Starting Bid £130,000

Property Type: Flat

Parking: On Street

Construction materials: Brick and block

Roofing type: Clay tiles

Risk of floods and or erosion: No

Flooded in last 5 years: No

Flood defences: No

Planning permissions or proposals for development: No

Coalfield or mining area: No

Listed property: No

Conservation area: No

Public rights of way: No

Adaptions for accessibility: No

Restrictions: No

Required access: No

Heating: Gas

Electric: National Grid

Water: Direct mains water

Water meter: No

Sewerage: Standard UK domestic

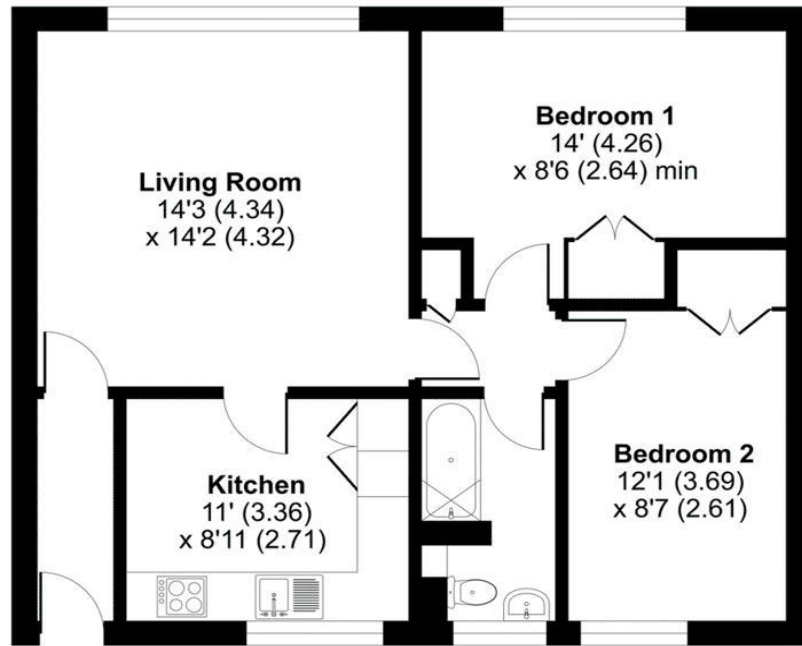
Air conditioning: No

Broadband: FTTP (fibre to the premises)

Mobile signal coverage: Good


# 46 Farleigh Court, Farleigh Lane, Maidstone, ME16 9BJ

Approximate Area = 682 sq ft / 63.3 sq m  
For identification only - Not to scale



**FIRST FLOOR**

 Floor plan produced in accordance with RICS Property Measurement 2nd Edition, Incorporating International Property Measurement Standards (IPMS2 Residential). © nichecom 2026. Produced for nichecom. REF: 1468839

Energy Efficiency Rating		Current	Potential
<i>Very energy efficient - lower running costs</i>			
(92-100) <b>A</b>			
(81-91) <b>B</b>			
(69-80) <b>C</b>			
(55-68) <b>D</b>		64	70
(39-54) <b>E</b>			
(21-38) <b>F</b>			
(1-20) <b>G</b>			
<i>Not energy efficient - higher running costs</i>			
<b>England, Scotland &amp; Wales</b>		EU Directive 2002/91/EC 	

Farleigh Lane, Maidstone, Kent, ME16 9BJ

Contact your local branch today for more information on this property:

**Mercantile House Silverlink Business Park, Wallsend, Tyne and Wear, NE28 9NX,**  
**[www.partneragents.co.uk](http://www.partneragents.co.uk)**

These particulars, whilst believed to be accurate are set out as a general outline only for guidance and do not constitute any part of an offer or contract. Intending purchasers should not rely on them as statements of representation of fact, but must satisfy themselves by inspection or otherwise as to their accuracy. No person in this firm's employment has the authority to make or give any representation or warranty in respect of the property.

